

=====

PN8016 PFM 800V MOSFET
FB PN8016 800V

PN8016

EMI

800V MOSFET

Buck Buck-Boost Flyback

1Ñ7J Ê y

1Ñ7J =	1Ñ7J 7 '	1Ñ7J İ7- yF
VDD	1	8ß(w+e\$Á7J
FB	2	yO, E7J ÈFJE÷+eLk yO,0c ÊEÄ *
SW	3	Q »MOSFET%? ±7J
GND	4 Ä5 Ä6 Ä7	`

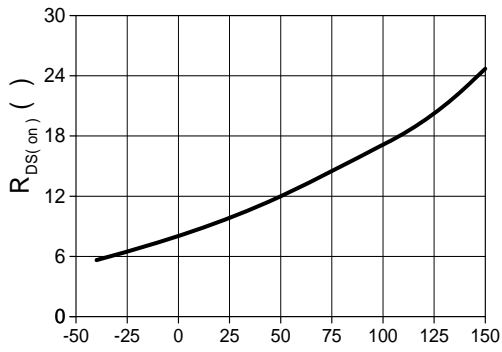
» İ).

x ñ » '	EÄ •+e »	0c 1 İ). ⁽¹⁾	İ). ⁽²⁾
PN8016	85-265 Xc	1.5W(5V300mA)	2W(5V400mA)

VDD-0.3~40V	10260
SW -0.3~750V	R _{JC} SOP-780 /W
FB-0.3~7V	ESD ⁽¹⁾ HBM ±4kV
-40~150	ESD ⁽²⁾8kV
-55~150	T _{pulse} =100us2A
1.	ESD (ESDA/JEDEC JDS-001-2014)		
2.			

(T_A = 25°C, V_{DD} = 15 V,)

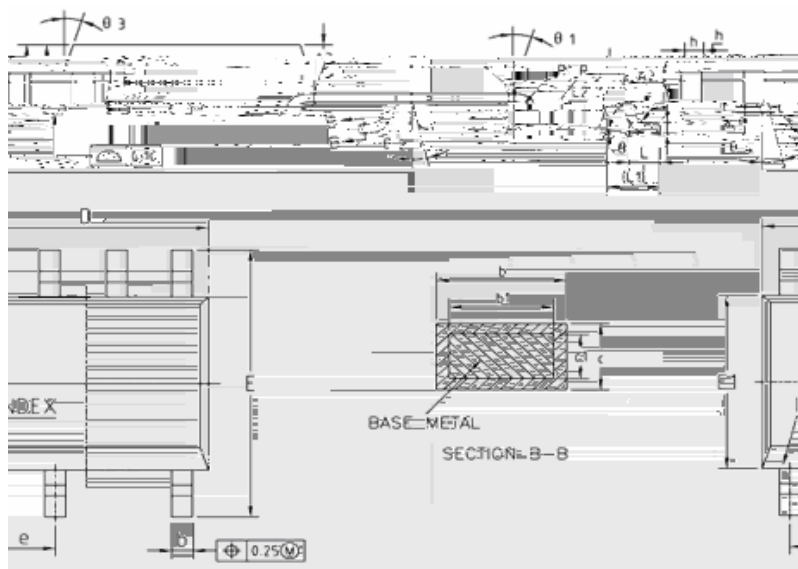
	BVDSS	I _{SW} = 250uA	750	820		V
	I _{OFF}	V _{sw}				



PN8016

Chipown

SOP-7



	(mm)	(mm)	(mm)		(mm)	(mm)	(mm)
A	1.35	1.55	1.75	L	0.45	0.60	0.80
A1	0.10	0.15	0.25	L1	1.04REF		
A2	1.25	1.40	1.65	L2	0.25BSC		
A3	0.50	0.60	0.70	R	0.07	—	—
b	0.38	—	0.51	R1	0.07	—	—
b1	0.37	0.42	0.47	h	0.30	0.40	0.50
c	0.17	—	0.25		0°	—	8°
c1	0.17	0.20	0.23	1	15°	17°	19°
D	4.80	4.90	5.00	2	11°	13°	15°
E	5.80	6.00	6.20	3	15°	17°	19°
E1	3.80	3.90	4.00	4	11°	13°	15°
e	1.270 BSC						

PN8016 YWWXXXXX	SOP-7
Y WW XXXXX	

- :
1. ;
 - 2.



SOP-7 Package								
A	T	T1	H	ØC	ØD	d	A0	B0
(mm)	(mm)	(mm)	(mm)	(mm)	(mm)	(mm)	(mm)	(mm)

